

SAWAN 
MAJESTY
taloja - navi mumbai

A LANDMARK BY
SHREE SAWAN GROUP



CORPORATE OFFICE : #62-63, 4TH FLOOR, MAHAVIR CENTRE, SECTOR - 17,

VASHI, NAVI MUMBAI - 400705. TEL.: (+9122) 2789 1175 / 27892637

SITE ADDRESS : PLOT NO. 35, SECTOR - 5, TALOJA, PHASE 1, NAVI MUMBAI - 410206.

EMAIL : SALES@SHREESAWANGROUP.COM | WEB : WWW.SHREESAWANGROUP.COM

SALES : (+91) 9820002099 / 9930805888

ARCEHITECT | RAJESH R.C.

RCC CONSULTANT | A.G. GOKHALE



MAHARERA REGISTRATION NO.:

P52000024591

[HTTPS://MAHARERA.MAHAONLINE.GOV.IN](https://maharera.mahaonline.gov.in)

follow us :  /shreesawangroup

MEMBER OF



SHREE SAWAN GROUP BEGAN IT'S JOURNEY IN 1984 AND HAS TO ITS CREDIT CLOSE TO A MILLION SQUARE FEET OF RESIDENTIAL AND COMMERCIAL REAL ESTATE IN ALMOST ALL NODES OF NAVI MUMBAI. THE GROUP'S FOCUS ON QUALITY OF CONSTRUCTION, TRANSPARENCY AND TIMELY DELIVERY OF PROJECTS HAS EARNED IT NEARLY 1000 SATISFIED CUSTOMERS BOTH IN INDIA AND OVERSEAS OVER THE LAST THREE DECADES.

"SAWAN MAJESTY" AN INTELLIGENTLY PLANNED CHARMING RESIDENTIAL CUM COMMERCIAL PROJECT IS LOCATED IN TALOJA, PHASE I. TALOJA IS THE FASTEST GROWING NODE OF NAVI MUMBAI. BECAUSE OF ITS CLOSE PROXIMITY TO KHARGHAR AND RAPID INFRASTRUCTURE DEVELOPMENT & PLANNING BY CIDCO LTD. IT IS ONE OF THE MOST SOUGHT AFTER NODE FOR BOTH THE ACTUAL USERS & INVESTORS.

"SAWAN MAJESTY" OFFERS QUICK ACCESS TO ALL MAJOR BUSINESS CENTRES, EDUCATIONAL HUBS, HIGHWAYS, HOSPITALS, METRO STATION & UPCOMING NAVI MUMBAI INTERNATIONAL AIRPORT. YET IT IS SURROUNDED BY GREENERY, YOUR HOME HERE WILL BE FREE OF NOISE AND POLLUTION. WITH ITS STRATEGIC LOCATION, THOUGHTFULLY DESIGNED APARTMENTS, SUPERLATIVE CONSTRUCTION AND STATE OF THE ART AMENITIES, "SAWAN MAJESTY" GUARANTEES YOU A LIFESTYLE OF HAPPINESS IN THE TRANQUILLITY OF WELL BEING AMIDST A POPULATED HABITAT.

A THING OF BEAUTY TO BEHOLD...
WHERE THE LUXURY & THE GRANDEUR UNFOLD

WELCOME TO SAWAN MAJESTY



PROJECT HALLMARK





PROJECT BY |



SHREE SAWAN GROUP

The trusted name for quality construction since 1984

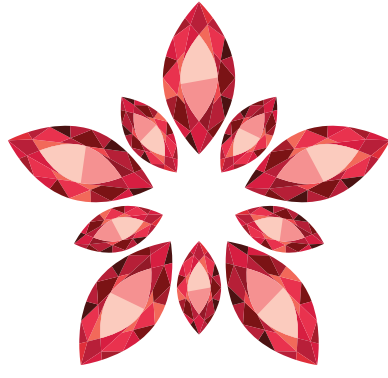


MAHARERA REGISTRATION NO.:
P52000024591

[HTTPS://MAHARERA.MAHAONLINE.GOV.IN](https://maharera.mahaonline.gov.in)

SAWAN 
MAJESTY
taloja - nadi quombai





INVITING EXQUISTELY EXPERIENCES
1 AND 2 BED RESIDENCES AT SAWAN MAJESTY



CIDCO TRANSFER PLOT



16TH STORIED PROJECT



EARTHQUAKE RESISTANCE
RCC STRUCTURE



REPUTED ELEVATORS



POWER BACKUP
FOR COMMON AREAS



FIRE FIGHTING SYSTEM



RAIN WATER HARVESTING



AMPLE CAR PARKING



DECORATIVE
ENTRANCE LOBBY



CCTV CAMERAS



INTERCOM FACILITY



SECURITY CABIN



LOCATION ADVANTAGES

SAWAN
MAJESTY
taloja - navi mumbai



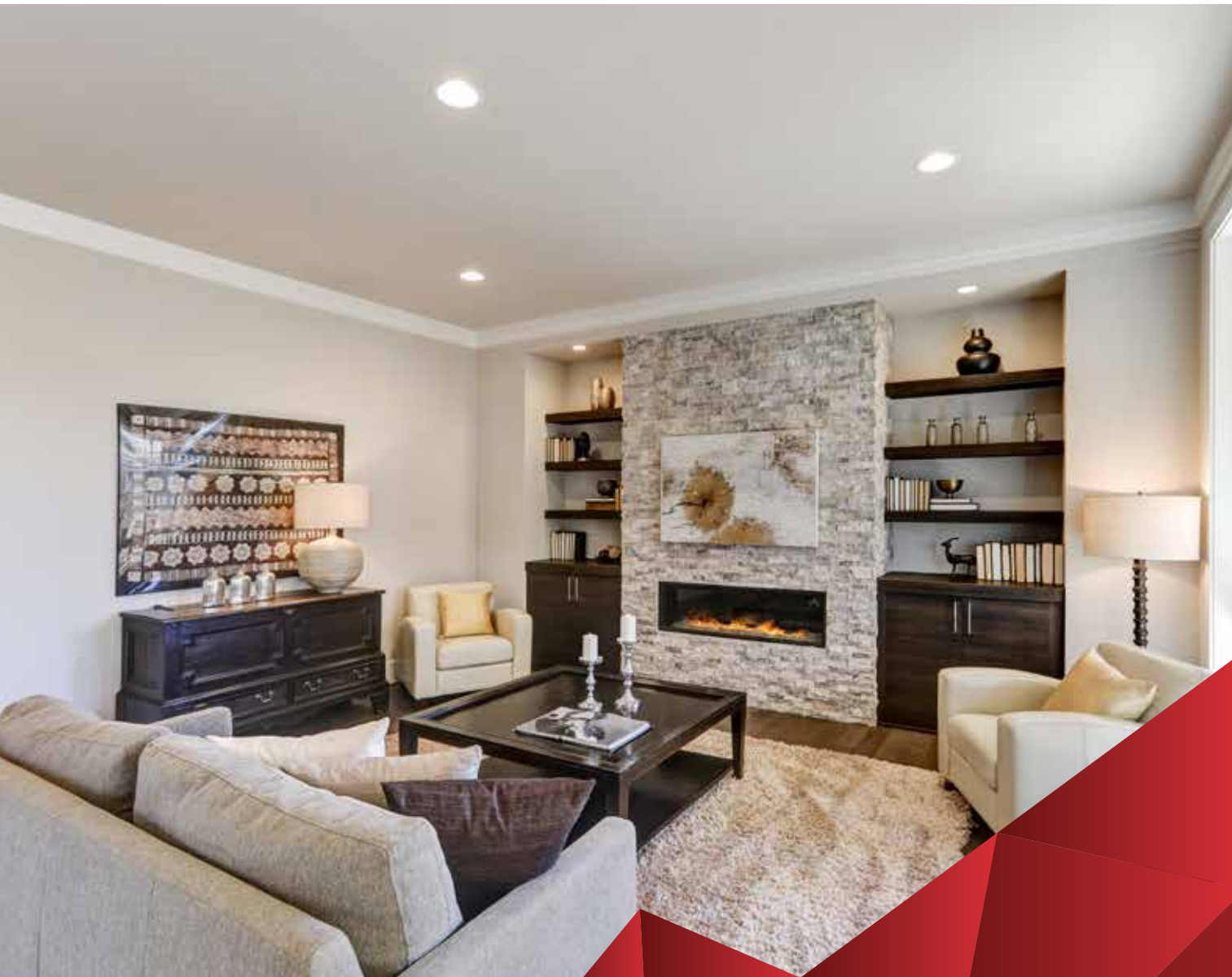




PODIUM AMENITIES

- FULLY EQUIPPED FITNESS CENTRE
- INDOOR GAMES
- TODDLERS PLAY AREA
- JOGGING TRACK
- MULTIPURPOSE COURT
- PARTY LAWN
- LANDSCAPED PLANTERS
- MEDITATION & YOGA ZONE
- FAMILY SITTING AREA WITH GAZEBO
- SENIOR CITIZEN'S ZONE
- SOCIETY OFFICE

PROJECT SPECIFICATIONS



FLOORING

- VITRIFIED TILES FLOORING IN ALL ROOMS
- CERAMIC / ANTI SKID FLOORING IN BALCONY / FB / TERRACES



ELECTRIFICATION

- CONCEALED COPPER WIRING WITH CIRCUIT BREAKER ELCB / MCB'S
- AMPLE ELECTRICAL POINTS IN ROOMS
- MODULAR SWITCHES OF SUPERIOR BRAND



DOORS & WINDOWS

- LAMINATED WOODEN FLUSH DOORS WITH WOODEN DOOR FRAMES IN LIVING & BEDROOMS
- TOILETS WITH WATER PROOF FIBER DOORS
- HEAVY SECTION POWDER COATED ALUMINIUM SLIDING WINDOWS WITH TINTED GLASS
- PROTECTIVE GRILLS ON ALL WINDOWS



KITCHEN

- GRANITE PLATFORM WITH STAINLESS STEEL SINK
- EXQUISITE COLLECTION GLAZED TELS UPTO BEAM HEIGHT
- FRIDGE, EXHAUST & WATER PURIFIER POINTS



WALLS AND PAINTS

- PUTTY FINISH WITH DISTEMPER PAINT ON INTERNAL WALLS
- PURE ACRYLIC PAINT ON EXTERNAL WALLS



TOILETS

- DESIGNER CERAMIC / ANTI SKID FLOORING
- DESIGNER GLAZED TILES UPTO DOOR HEIGHT
- CONCEALED PLUMBING
- BRANDED CP & SANITARY FITTINGS
- PROVISION FOR EXHAUST FAN & GEYSER





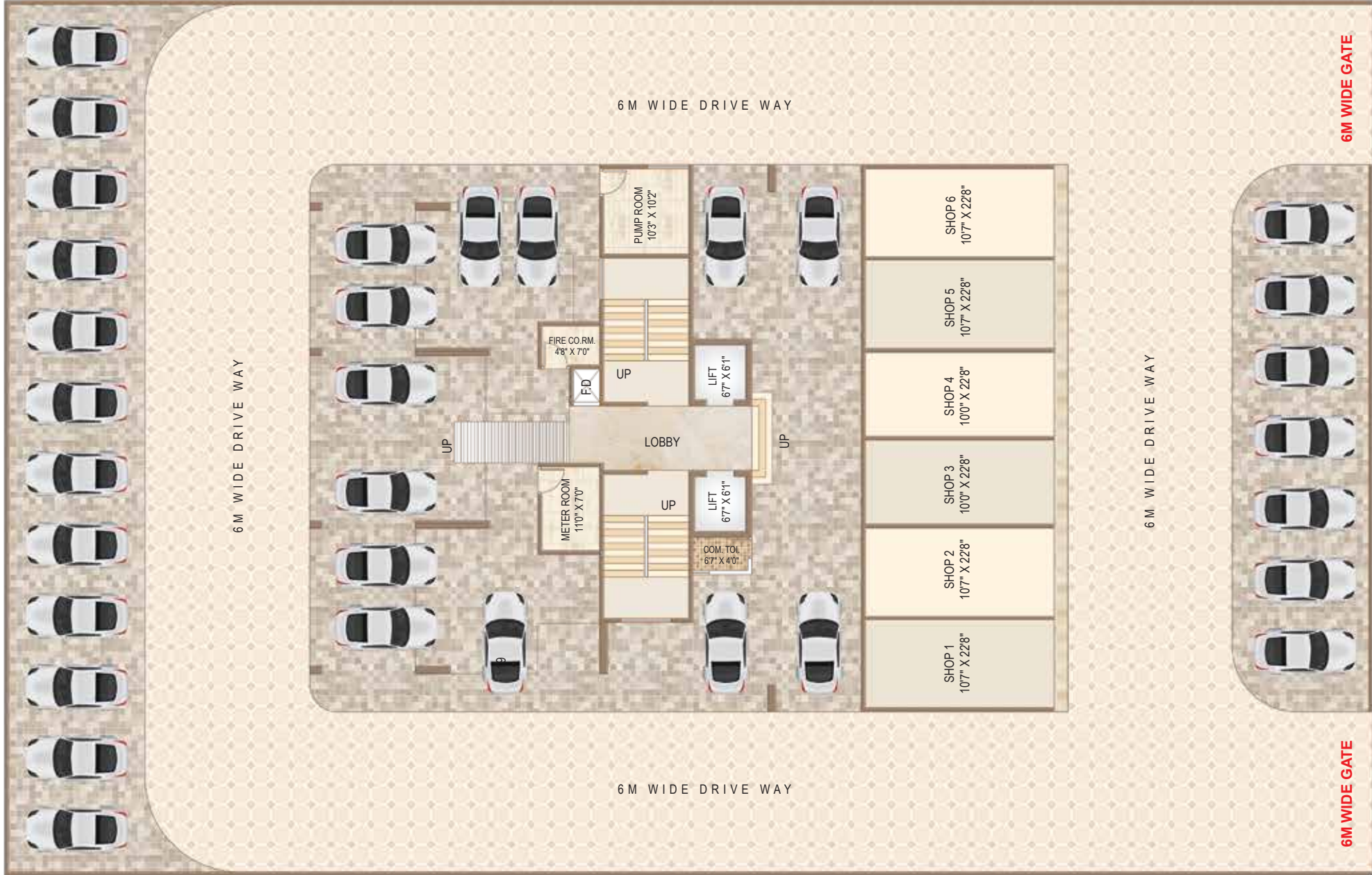
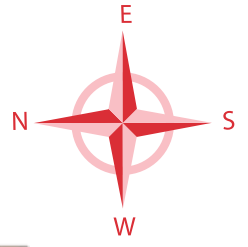
1 BHK ISOMETRIC VIEW



2 BHK ISOMETRIC VIEW



GROUND FLOOR PLAN



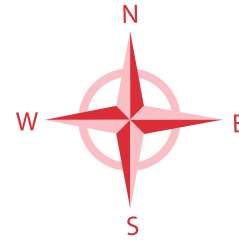
- 1 - TODDLERS PLAY AREA
- 2 - MEDITATION & YOGA ZONE
- 3 - LANDSCAPED PLANTERS
- 4 - JOGGING TRACK
- 5 - INDOOR GAMES
- 6 - SENIOR CITIZEN'S ZONE



- 7 - FAMILY SITTING AREA WITH GAZEBO
- 8 - FULLY EQUIPPED FITNESS CENTRE
- 9 - MULTIPURPOSE COURT
- 10 - PARTY LAWN
- 11 - SOCIETY OFFICE

PODIUM FLOOR PLAN

SECOND FLOOR PLAN



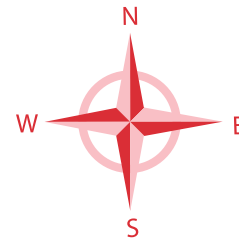
TYPICAL FLOOR PLAN

3RD_5TH_7TH_9TH



TYPICAL FLOOR PLAN

4TH_6TH_8TH



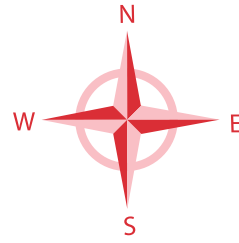
TYPICAL FLOOR PLAN

10TH_12TH_14TH



TYPICAL FLOOR PLAN

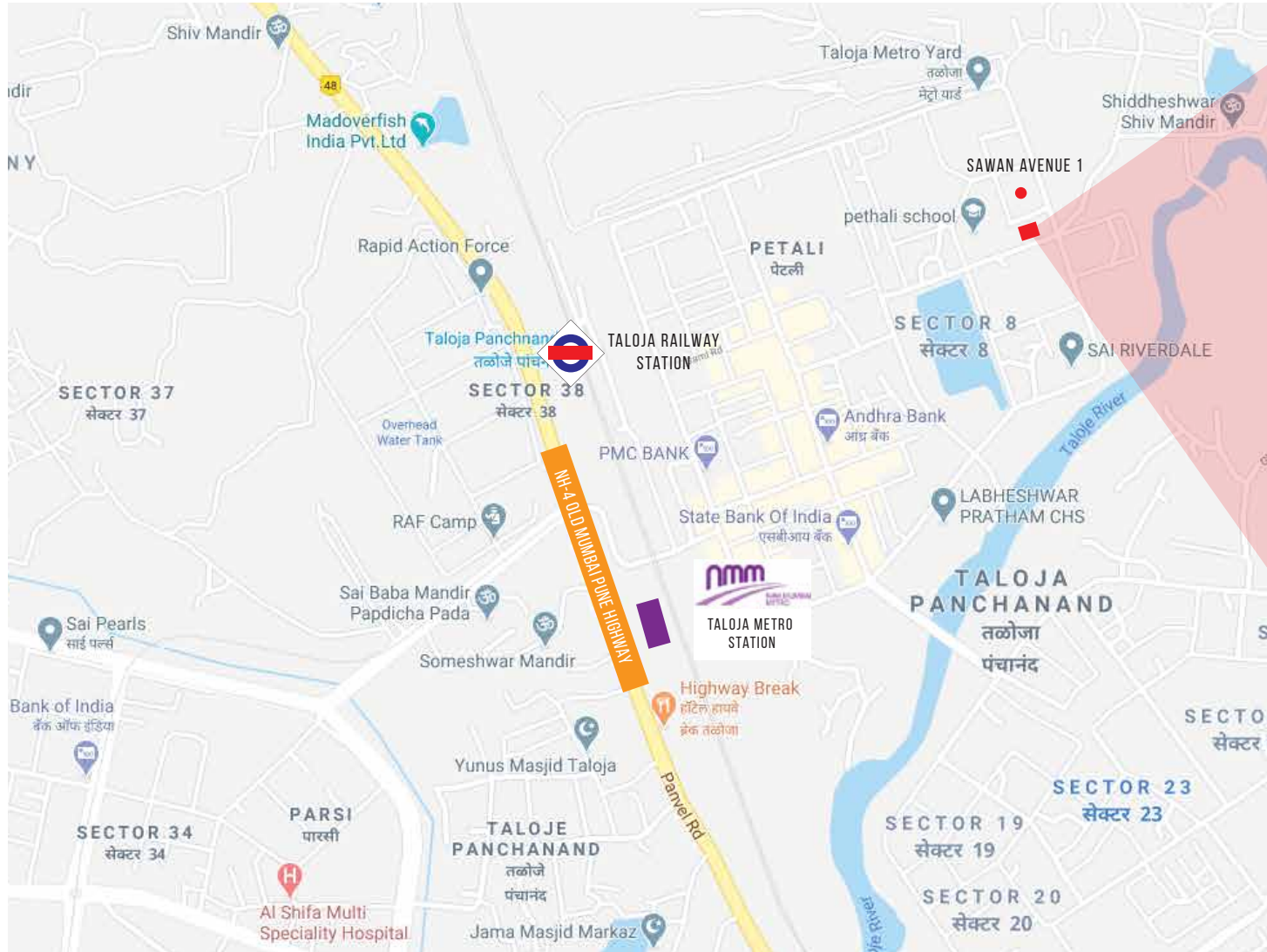
11TH_13TH_15TH



SIXTEENTH FLOOR PLAN



LOCATION MAP



SAWAN MAJESTY

PLOT NO. 35, SECTOR - 5,
TALOJA, PHASE 1, NAVI MUMBAI - 410206.

This brochure is purely conceptual, indicative and not a legal offering. All illustrations & pictures are artist's impression only. The plans, drawing, amenities etc. are subject to the approval of respected authorities and may be changed without notifications if necessary. The Promoter / Architect reserves the rights to add / desire / alter any items / details / specifications / elevations mentioned here in. The amenities shown inside and stock images in the brochure are purely indicative.

RECENTLY COMPLETED PROJECTS



SAWAN HERITAGE

Kalamboli - Navi Mumbai.



SAWAN AVENUE I

Taloja - Phase1
Navi Mumbai.



SAWAN AVENUE II

Taloja - Phase1
Navi Mumbai.

PAST PROJECTS

SAWAN LIFESTYLE - KHARGHAR

SAWAN PRIDE - KHARGHAR

SAWAN RESIDENCY - KHARGHAR

SAWAN HIGHNESS - KHARGHAR

SAWAN GARDENIA - KALAMBOLI

SAWAN TOWER - KALAMBOLI

SAWAN HARMONY - CBD BELAPUR

SAWAN NIWAS - CBD BELAPUR

SAWAN MAHAL - CBD BELAPUR

CHANKYA SHOPPING CENTER - CBD BELAPUR

PANCHSHEEL CHS - AIROLI

SAWAN KUNJ - NEW PANVEL

SAWAN APARTMENT - NEW PANVEL

SAWAN NAGARI - PANVEL

SAWAN ELEGANCE - KOPERKHAIRANE

SAWAN VIHAR - KOPERKHAIRANE

SAWAN REGENCY - KOPERKHAIRANE

SAWAN PLAZA - KOPERKHAIRANE

SAWAN MANSION - KOPERKHAIRANE

JAGAT ENCLAVE - THANE

TULSI TOWER - MALAD WEST

ONGOING PROJECTS



THE SIGNATURE

Seawoods, Nerul (W), Navi Mumbai

UPCOMING PROJECTS

SAWAN RIVIERA - PANVEL

SAWAN GRANDEUR - PANVEL

SALES : (+91) 9820002099 / 9930805888

WWW.SHREESAWANGROUP.COM